

# FOR SALE

---

Overstone Road,  
Hammersmith, W6

---

Flat  
Brackenbury Village

---

£525,000 sh of fh

---

1  1  1 

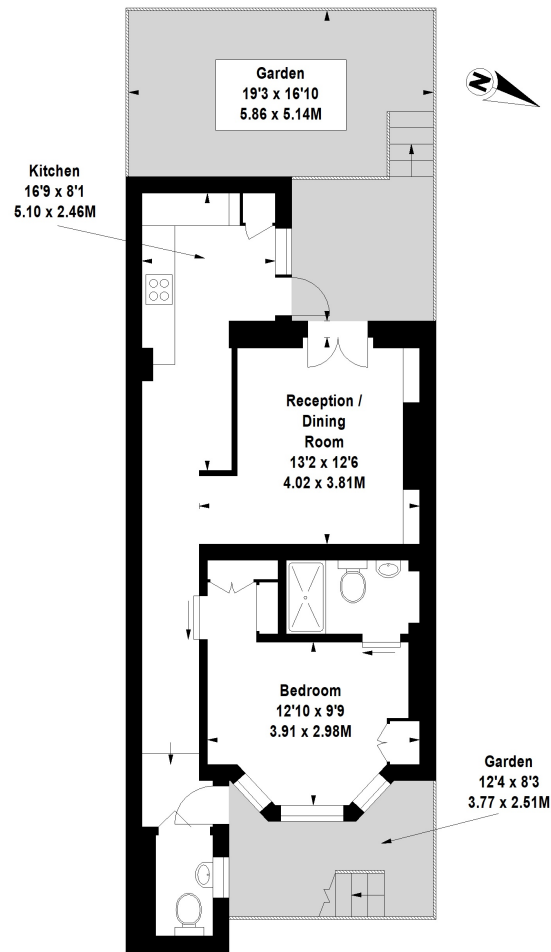


**horton  
andgarton**

SALES / LETTINGS / PROPERTY MANAGEMENT

hortonandgarton.co.uk | Sales 020 8819 0510 | Lettings 020 8819 0511  
172 King Street, Hammersmith, W6 0QU





LOWER GROUND FLOOR

**OVERSTONE ROAD, W6**

Approximate Gross Internal Area  
**549 Sq' / 51 Sq.M**

**horton  
and garton**

Floor Plan produced by Mays Floorplans ©. Tel 020 3397 4594  
 Illustration for identification purposes only, not to scale.  
 All measurements are maximum, and include wardrobes and window bays where applicable



Victorian garden flat | One bedroom - One bathroom |  
 549 Sq' - 51 SqM | West-facing garden | EPC rating C |  
 Brackenbury Village



hortonandgarton.co.uk  
 Sales 020 8819 0510  
 Lettings 020 8819 0511

172 King Street, Hammersmith, W6 0QU