

FOR SALE

Carthew Road,
Hammersmith, W6

Terraced House
Brackenbury Village

£1,500,000 fh

4  2  2 

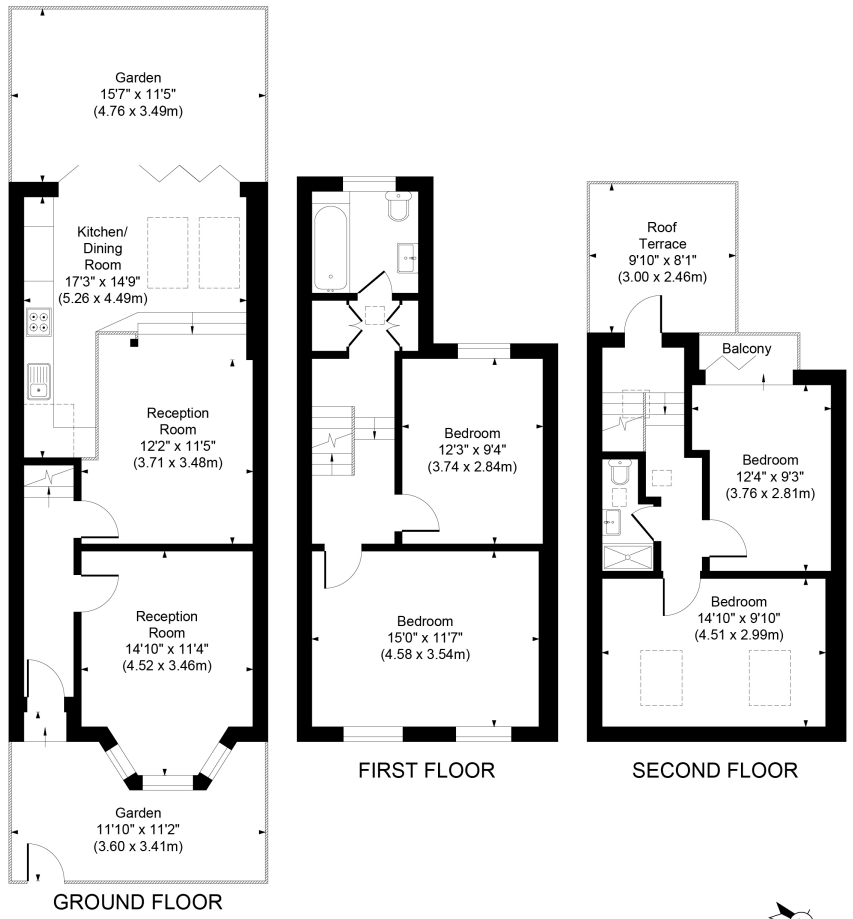


**horton
andgarton**

SALES / LETTINGS / PROPERTY MANAGEMENT

hortonandgarton.co.uk | Sales 020 8819 0510 | Lettings 020 8819 0511
172 King Street, Hammersmith, W6 0QU





CARTHEW ROAD,
 APPROXIMATE GROSS INTERNAL AREA
1339 Sq' / 124.40 SqM

Not to scale, for guidance only and must not be relied upon as a statement of fact.
 All measurements and areas are approximate only



Victorian family house | Four bedrooms - Two bathrooms | 1339 Sq' - 124.40 SqM | West facing garden | EPC rating D | Brackenbury Village



hortonandgarton.co.uk
 Sales 020 8819 0510
 Lettings 020 8819 0511

172 King Street, Hammersmith, W6 0QU