

FOR SALE

Coningham Road,
Shepherd's Bush, W12

Flat
West London

£725,000 sh of fh

2  1  1 

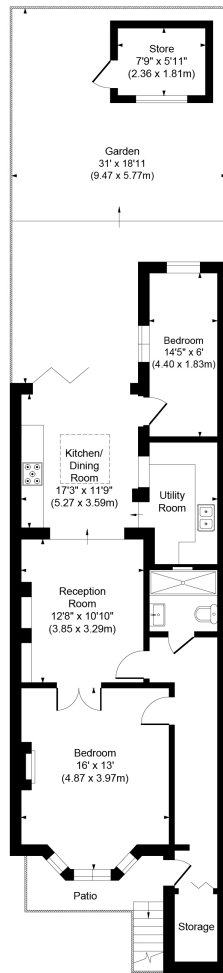


**horton
andgarton**

SALES / LETTINGS / PROPERTY MANAGEMENT

hortonandgarton.co.uk | Sales 020 8819 0510 | Lettings 020 8819 0511
172 King Street, Hammersmith, W6 0QU





LOWER GROUND FLOOR



CONINGHAM ROAD, W12

APPROXIMATE GROSS INTERNAL AREA

803 Sq' / 74.58 SqM

APPROXIMATE STORE AREA

46 Sq' / 4.27 SqM

APPROXIMATE TOTAL AREA

849 Sq' / 78.85 SqM

Not to scale, for guidance only and must not be relied upon as a statement of fact.
All measurements and areas are approximate only



Victorian garden flat | Two bedrooms - One bathroom |
803 Sq' - 74.58 SqM | 31' West facing garden | EPC
rating C | Shepherd's Bush



hortonandgarton.co.uk

Sales 020 8819 0510

Lettings 020 8819 0511

172 King Street, Hammersmith, W6 0QU