

# TO LET

---

Westwick Gardens,  
Brook Green, W14

---

Flat  
Brook Green

---

£2,250 pcm

---

2  1  1 

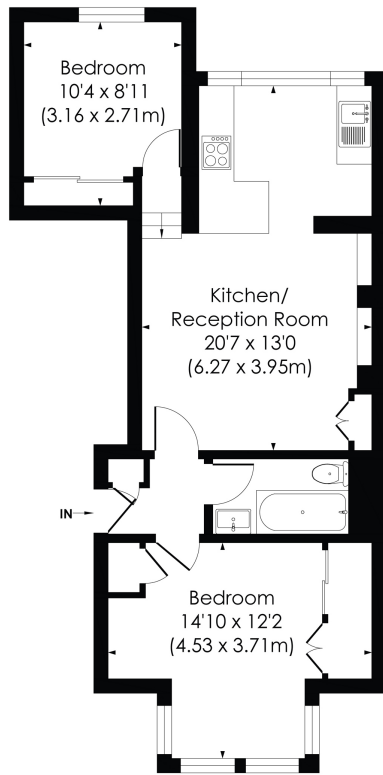


**horton  
andgarton**

SALES / LETTINGS / PROPERTY MANAGEMENT

hortonandgarton.co.uk | Sales 020 8819 0510 | Lettings 020 8819 0511  
172 King Street, Hammersmith, W6 0QU





RAISED GROUND FLOOR



**WESTWICK GARDENS, W14**

Approx. Gross Internal Floor Area

**568 Sq. ft/52.76 Sq. m**



© Pixangle Property Marketing Ltd. info@pixangle.com Tel: 0208 870 2118

This floor plan has been prepared for the purpose of illustration only in accordance with the latest RICS code of measuring practice and is not to scale. All measurements and areas are approximate and whilst every effort has been made to ensure the accuracy of the plan contained here, no responsibility is taken for any error, omission or misstatement.



Two bedrooms | 568 Sq' / 52 Sq M | Open plan living and kitchen | Period charm and character | EPC rating C | Brook Green



hortonandgarton.co.uk

Sales 020 8819 0510

Lettings 020 8819 0511

172 King Street, Hammersmith, W6 0QU