

# TO LET

---

Bazalgette Court,  
Riverside, W6

---

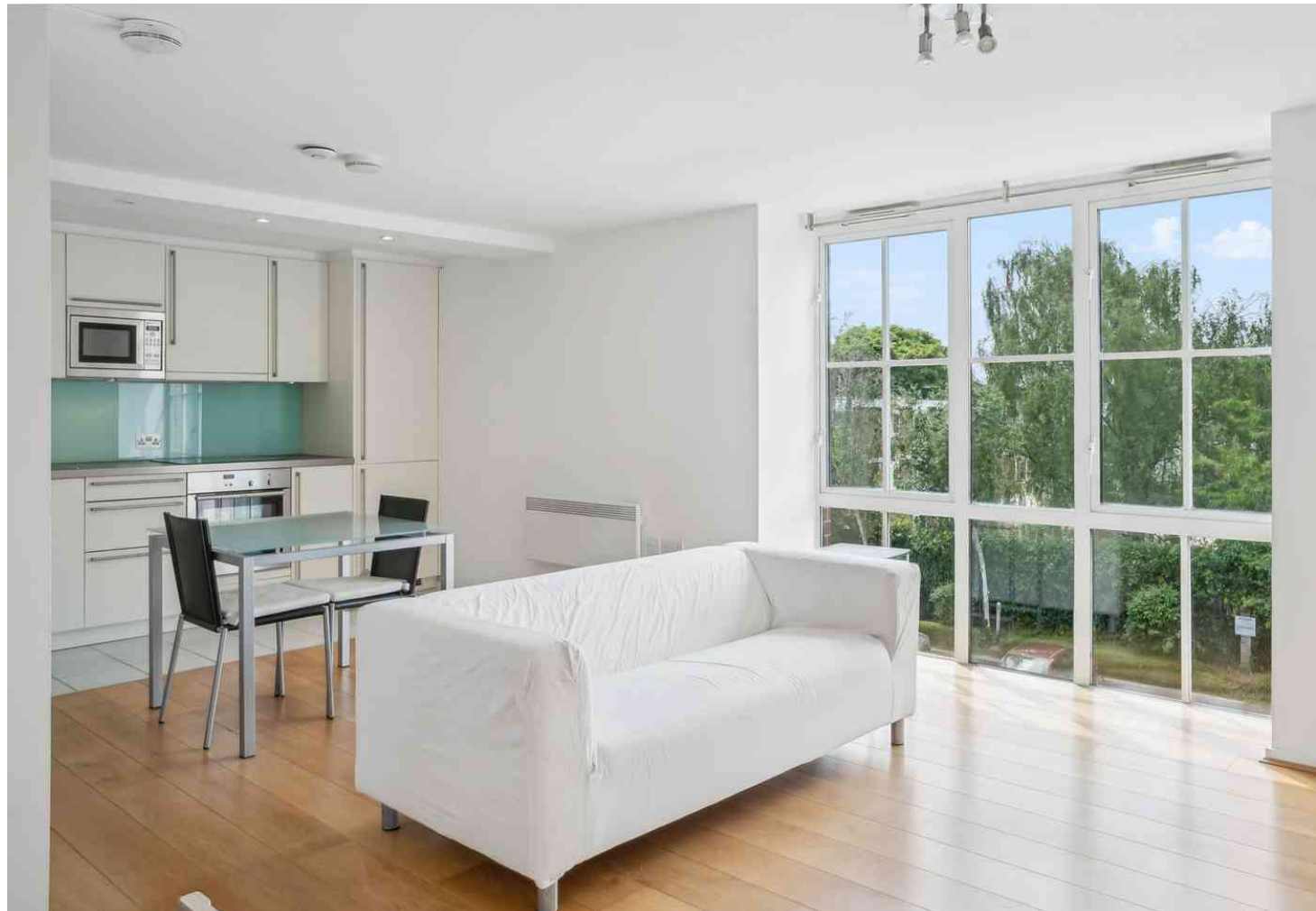
Flat  
Riverside

---

£369 p/w lh

---

0  1  1 

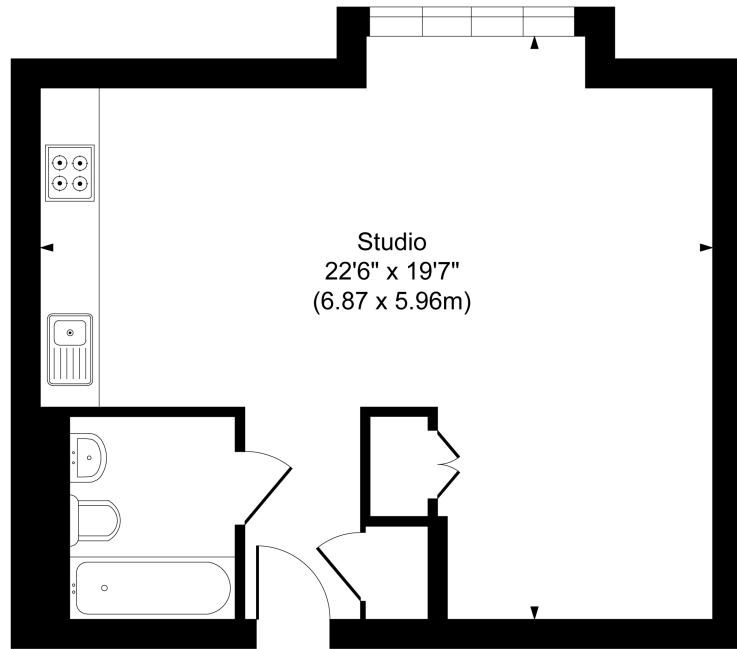


**horton  
andgarton**

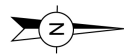
SALES / LETTINGS / PROPERTY MANAGEMENT

hortonandgarton.co.uk | Sales 020 8819 0510 | Lettings 020 8819 0511  
172 King Street, Hammersmith, W6 0QU





SECOND FLOOR



**BAZALGETTE COURT, W6**

APPROXIMATE GROSS INTERNAL AREA

407 Sq/ 37.84 SqM

Not to scale, for guidance only and must not be relied upon as a statement of fact.  
All measurements and areas are approximate only



Riverside conversion flat | Studio - One bathroom |  
Allocated and gated off-street parking | Furnished | EPC  
rating B | The Riverside



hortonandgarton.co.uk  
Sales 020 8819 0510  
Lettings 020 8819 0511

172 King Street, Hammersmith, W6 0QU